

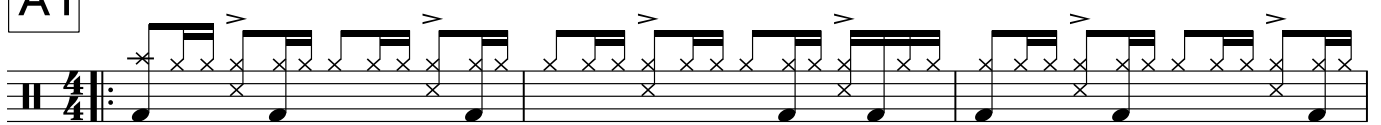
# D A I L Y C H O P S

## 'Autumnal Equinox' (Drum Chart)

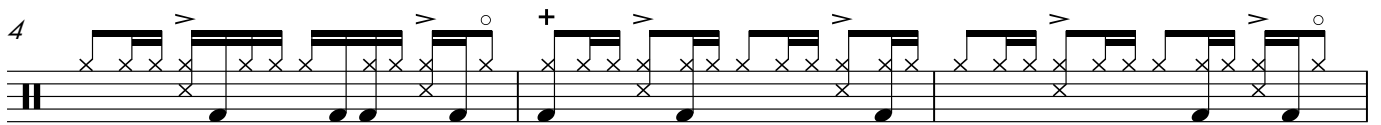
Written and performed by Tony Robinson

For a complete standard notation key visit [www.tonyrobinson.co.uk/notation-key](http://www.tonyrobinson.co.uk/notation-key)

**A1** Fusion ♩ = 110



Measure 1 of section A1. The notation is on a single staff with a drum clef and a 4/4 time signature. It features a complex rhythmic pattern with eighth and sixteenth notes, including accents and a cross symbol.



Measure 2 of section A1. The notation continues the rhythmic pattern from measure 1, including a plus sign and a circle symbol.

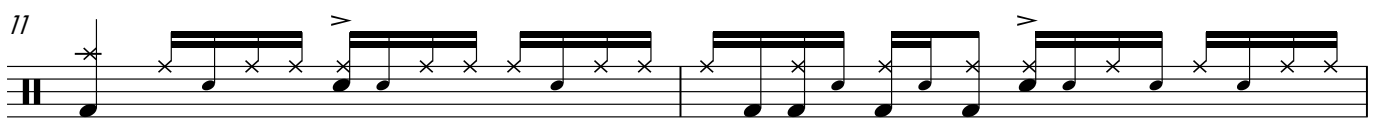


Measure 3 of section A1. The notation continues the rhythmic pattern, ending with a double bar line.

**B1**



Measure 4 of section B1. The notation continues the rhythmic pattern from section A1, starting with a 9-measure rest.

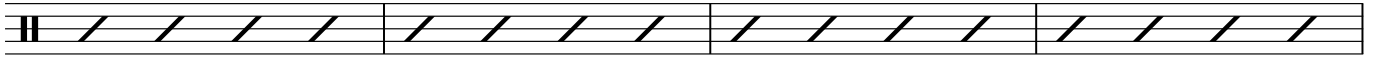


Measure 5 of section B1. The notation continues the rhythmic pattern from section A1, starting with an 11-measure rest.

Visit [TonyRobinson.co.uk](http://TonyRobinson.co.uk) for more free drum resources!

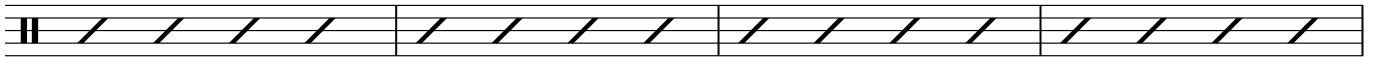
13 cont. sim.

(8)



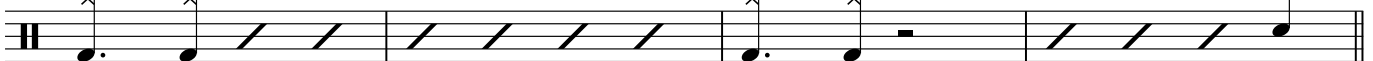
17

(12) Fill



21 *Fill*

*(keys solo break)*  
*Fill*

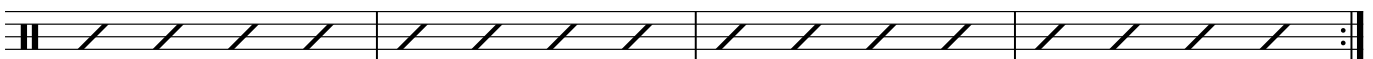


**C** KEYS SOLO



29 cont. sim.

Fill (8)



**D** GUITAR SOLO

33 cont. sim.

Musical notation for measures 33-36, featuring a repeating eighth-note pattern with accents and a guitar-specific notation (x) for muted notes. The notation ends with a double bar line and a hatched area indicating continuation.

37 (8)

Musical notation for measures 37-40, consisting of a hatched area indicating continuation for 8 measures.

41 Fill (optional 2-bar tacet or fill)

Musical notation for measures 41-43, starting with a hatched area, followed by a quarter rest, a quarter note with an accent, and a half note with an accent. The notation ends with a double bar line and a hatched area.

**E** DRUM SOLO

44

Musical notation for measures 44-48, featuring a drum solo with eighth notes and a guitar accompaniment with eighth notes and accents. The notation ends with a double bar line and a hatched area.

49

Musical notation for measures 49-53, featuring a drum solo with eighth notes and a guitar accompaniment with eighth notes and accents. The notation ends with a double bar line and a hatched area.

**A2**

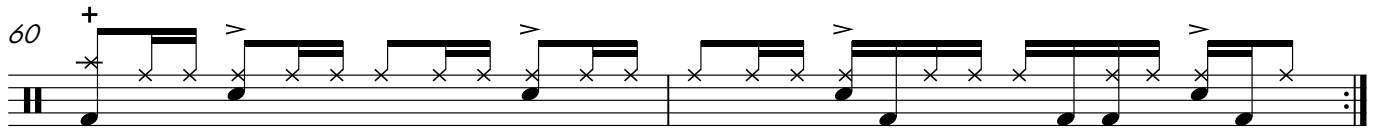
54

Musical notation for measures 54-56, featuring a guitar-specific notation (x) for muted notes and eighth notes with accents. The notation ends with a double bar line and a hatched area.

57

Musical notation for measures 57-60, featuring a guitar-specific notation (x) for muted notes, eighth notes with accents, and a plus sign (+) above a note. The notation ends with a double bar line and a hatched area.

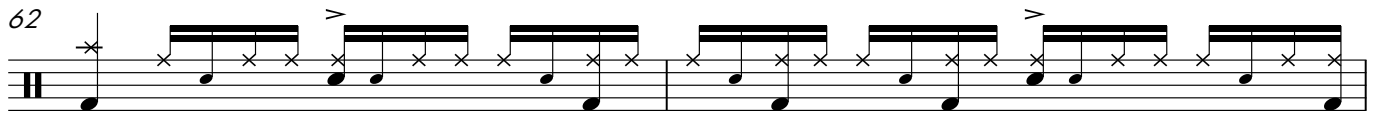
60



Musical notation for measure 60 on a snare drum staff. It begins with a plus sign (+) above the first note. The notation consists of a series of eighth notes with beams, each marked with an 'x' above it. There are four accents (>) placed above the second, fourth, sixth, and eighth notes of the sequence.

**B2**

62



Musical notation for measure 62 on a snare drum staff. It features a sequence of eighth notes with beams and 'x' marks above them. Accents (>) are placed above the second, fourth, and sixth notes.

64



Musical notation for measure 64 on a snare drum staff. It features a sequence of eighth notes with beams and 'x' marks above them. Accents (>) are placed above the second and fourth notes.

66 cont. sim. (8)



Musical notation for measure 66 on a snare drum staff. The notation consists of a continuous series of diagonal slashes (/) across the staff, indicating a continuous simulation of a drum sound.

70 (12) Fill



Musical notation for measure 70 on a snare drum staff. The notation consists of a continuous series of diagonal slashes (/) across the staff, indicating a continuous simulation of a drum sound.

74



Musical notation for measure 74 on a snare drum staff. It starts with a dotted quarter note followed by an eighth note with an accent (>) and a slur. The next two measures contain diagonal slashes (/). The final measure contains a dotted quarter note with an accent (>) and a slur, followed by a half note with an accent (>) and a slur. Above the half note is the text 'CA'.